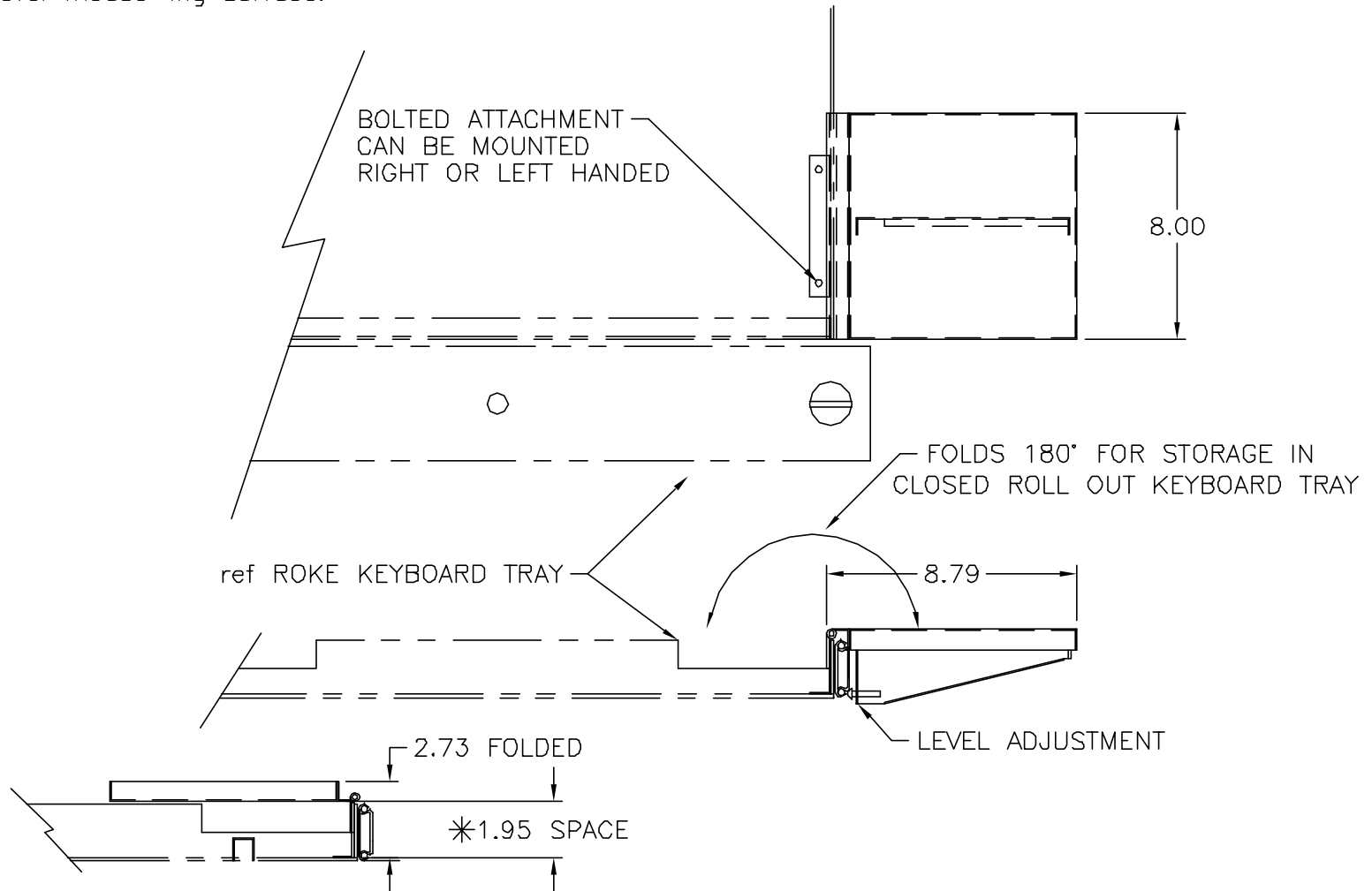


Installation:

Position MP8 mounting angle into ROKE drawer over two pre punched holes. Insert machine screws from below drawer and secure one fastener with Hex standoff. Secure second fastener with KEPS nut included. Standoff with bumper provides support to prevent MP8 from depressing keyboard keys when flipped for storage. Adjust machine screw on pivoting support leg to level mouse-ing surface.



* NOTE: AVAILABLE SPACE FOR KEYBOARD IS REDUCED TO 1.95 INCHES LESS THICKNESS OF ANY MOUSE PAD YOU MAY ATTACH